

---

Monday, 6 September 2021

---

*Te Hui o Te Kaunihera ā-Rohe o Heretaunga*

**Hastings District Council**

**Hastings District Rural Community Board Meeting**

*Kaupapataka*

# Attachments - Volume 2

---

*Te Rā Hui:*  
Meeting date: **Monday, 6 September 2021**

---

*Te Wā:*  
Time: **2.00pm**

---

*Te Wāhi:*  
Venue: **Via Zoom (Audiovisual Link)**

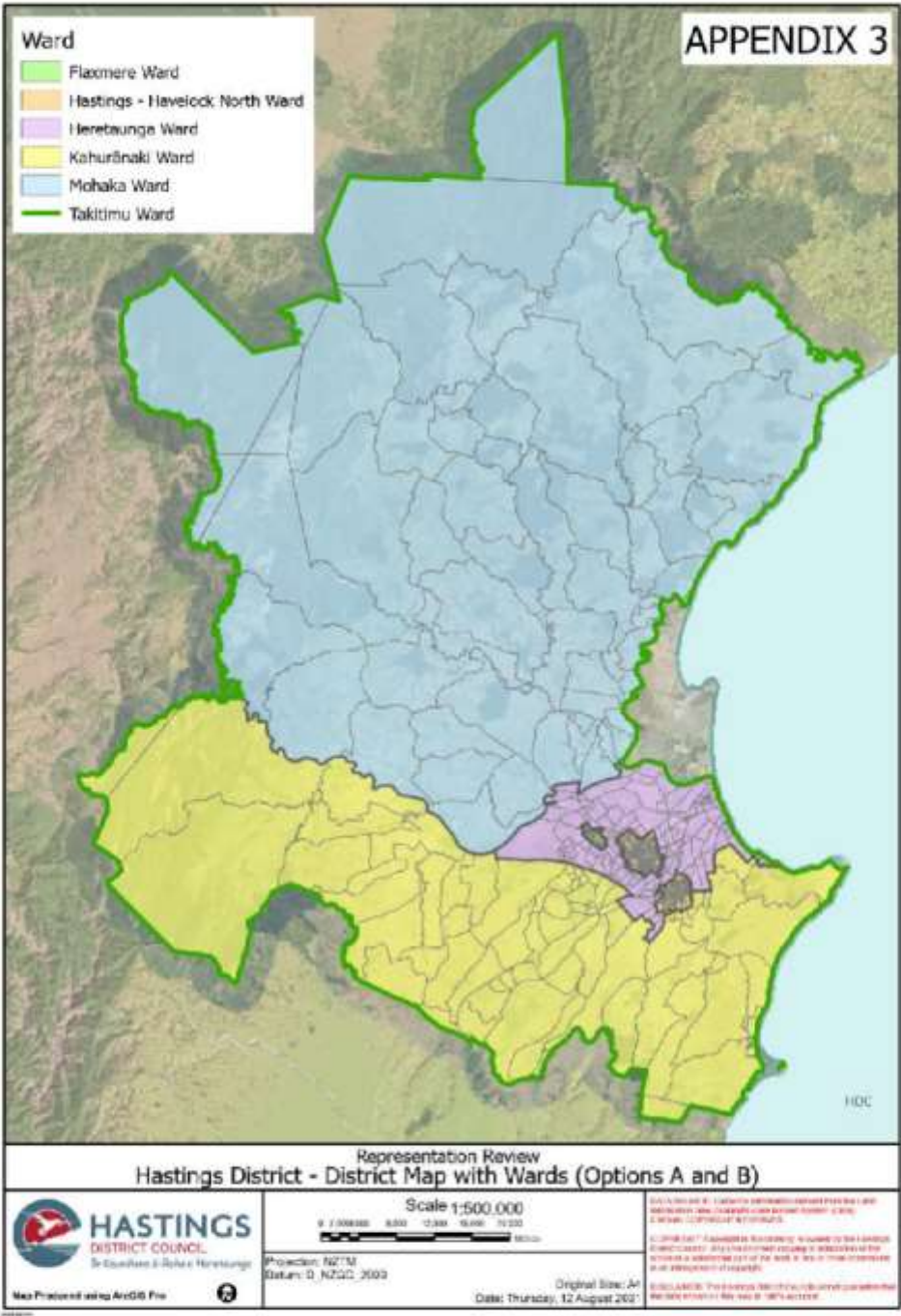
---

**Watch Council meetings  
streamed live on our website  
[www.hastingsdc.govt.nz](http://www.hastingsdc.govt.nz)**

**HASTINGS DISTRICT COUNCIL**  
207 Lyndon Road East, Hastings 4122 | Private Bag 9002, Hastings 4156  
Phone **06 871 5000** | [www.hastingsdc.govt.nz](http://www.hastingsdc.govt.nz)  
**TE KAUNIHERA Ā-ROHE O HERETAUNGA**

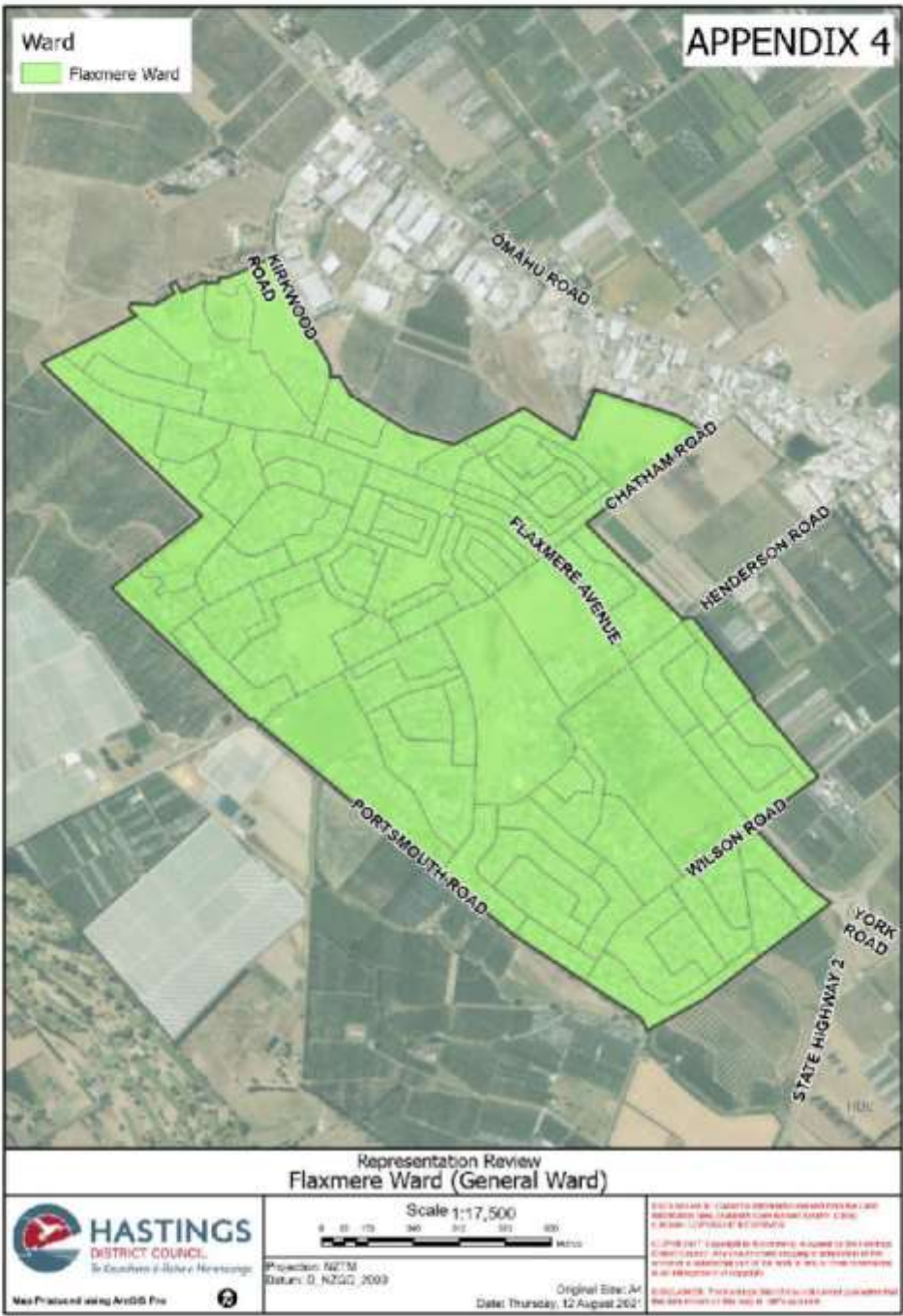
ITEM	SUBJECT	PAGE
<b>8.</b>	<b>HDC REPRESENTATION REVIEW 2021/22 INITIAL PROPOSAL</b>	
Attachment 1:	Appendices to Council Resolution 260821 Agenda Item 7 Representation Review 2021/22 pdf	3
Attachment 2:	Hastings District Council Representation Review 2021/22 Initial Proposal Public Notice	15
Attachment 3:	HDC Representation Review Initial Proposal 2021/22_A5_Flyer	17
Attachment 4:	Representation Review Initial Proposal proposed meshblock shifts maps	19



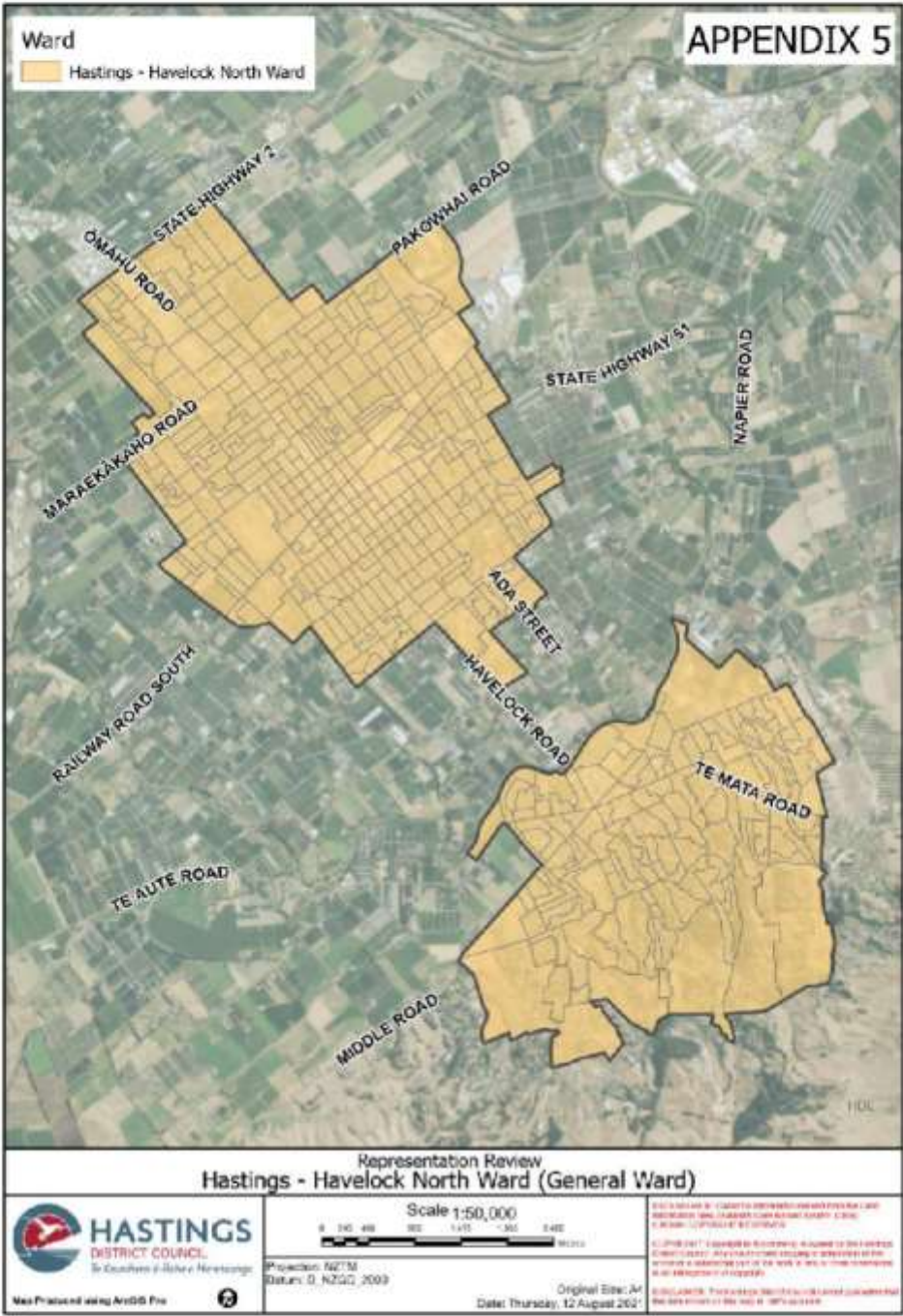


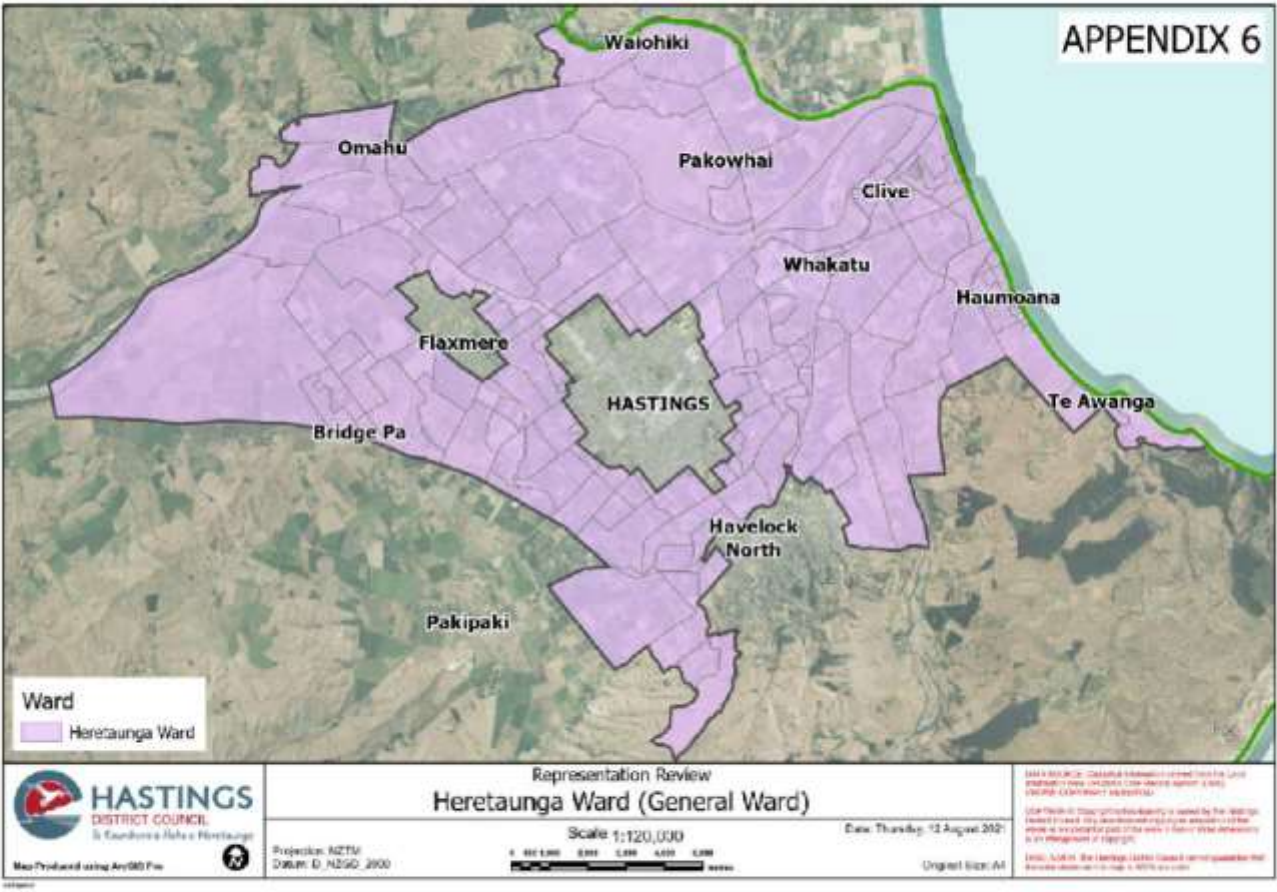
Item 7

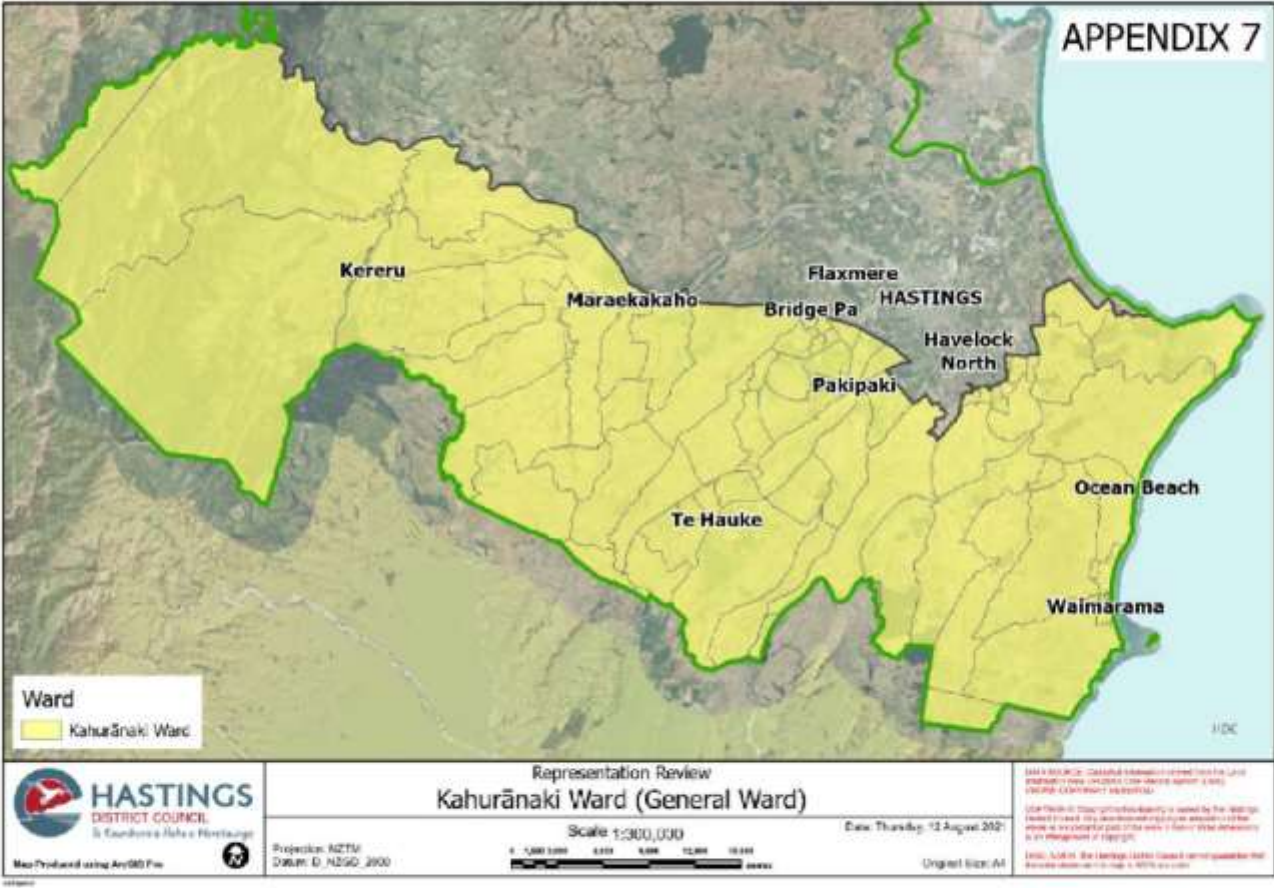
Item 8





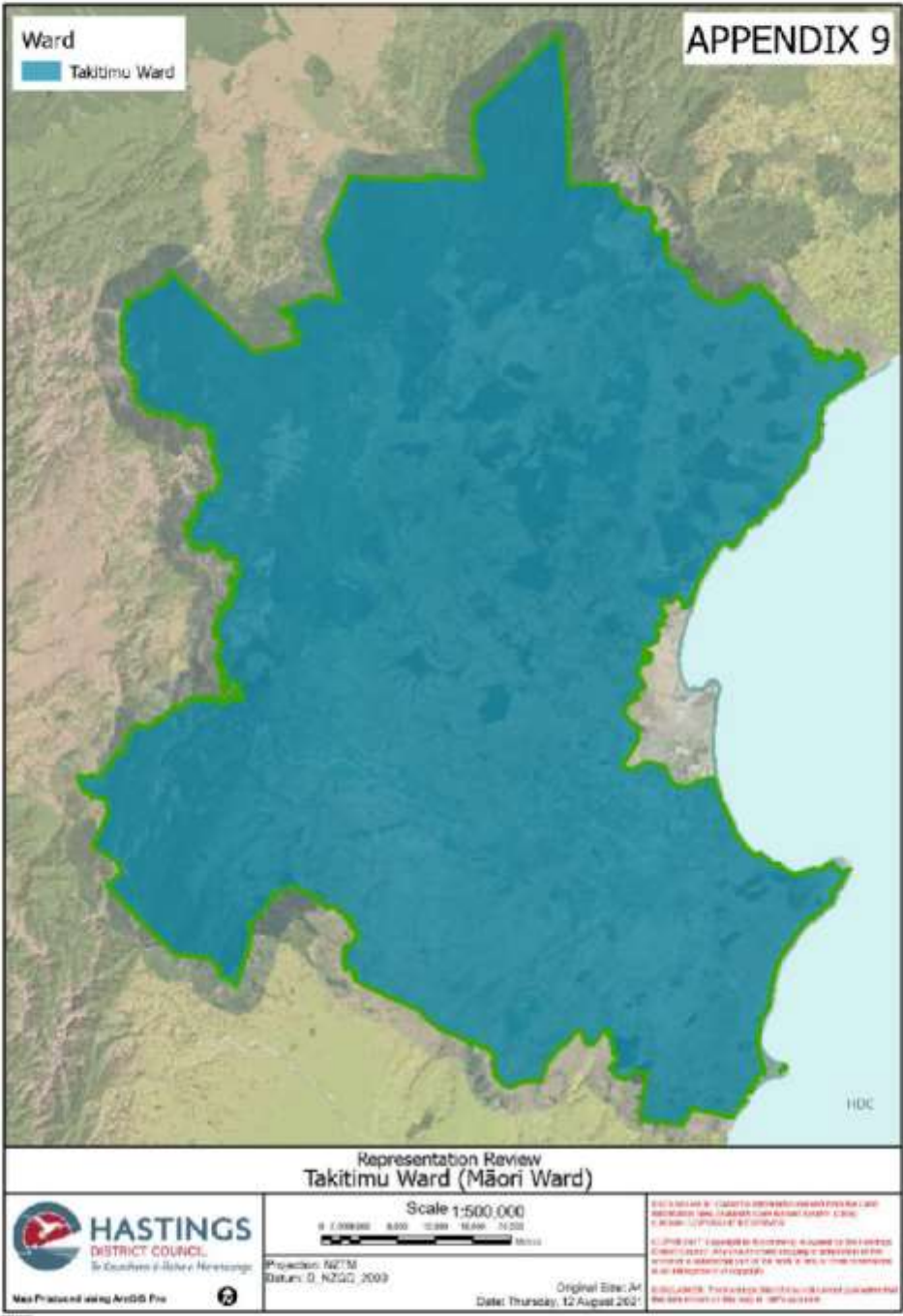


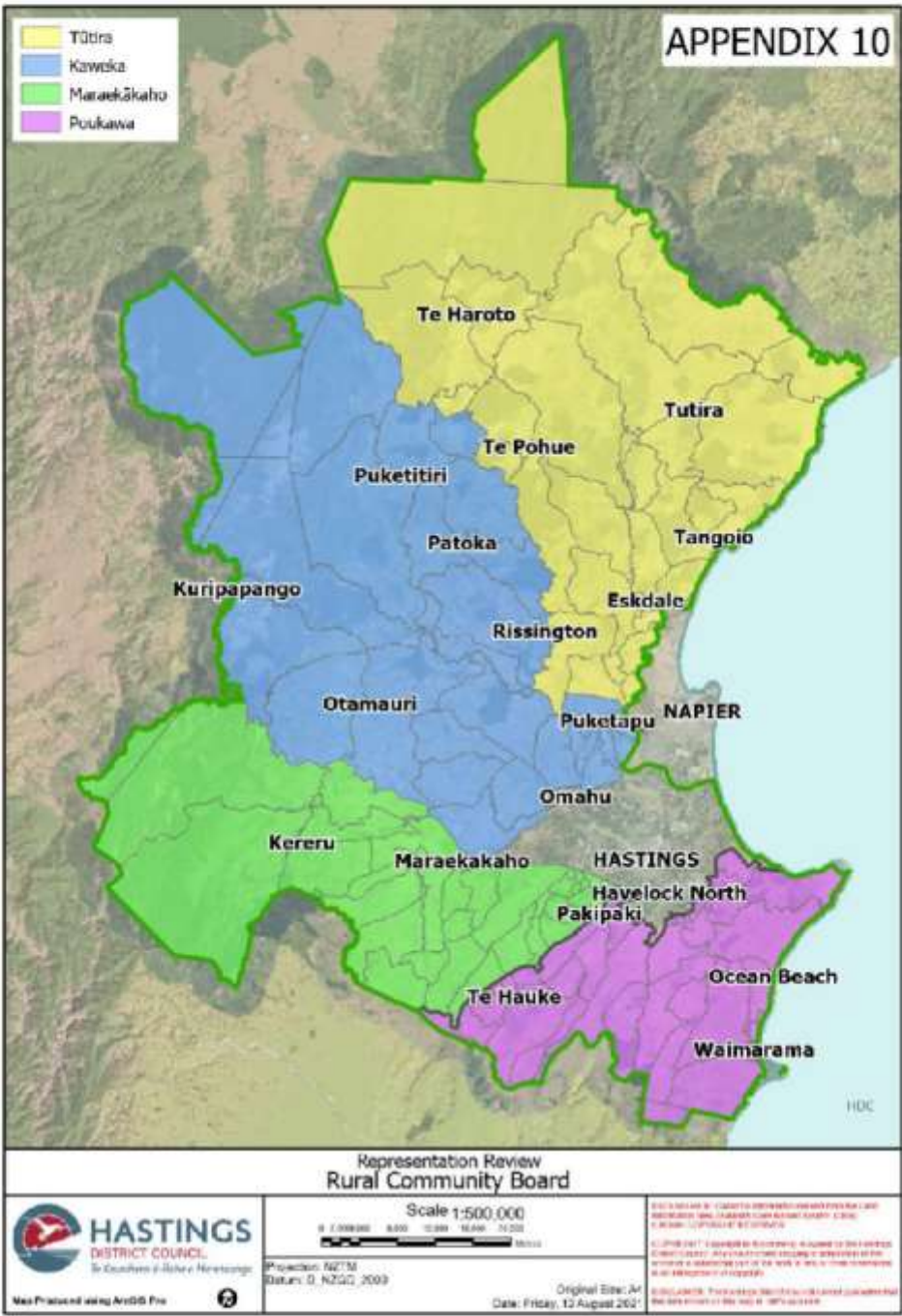








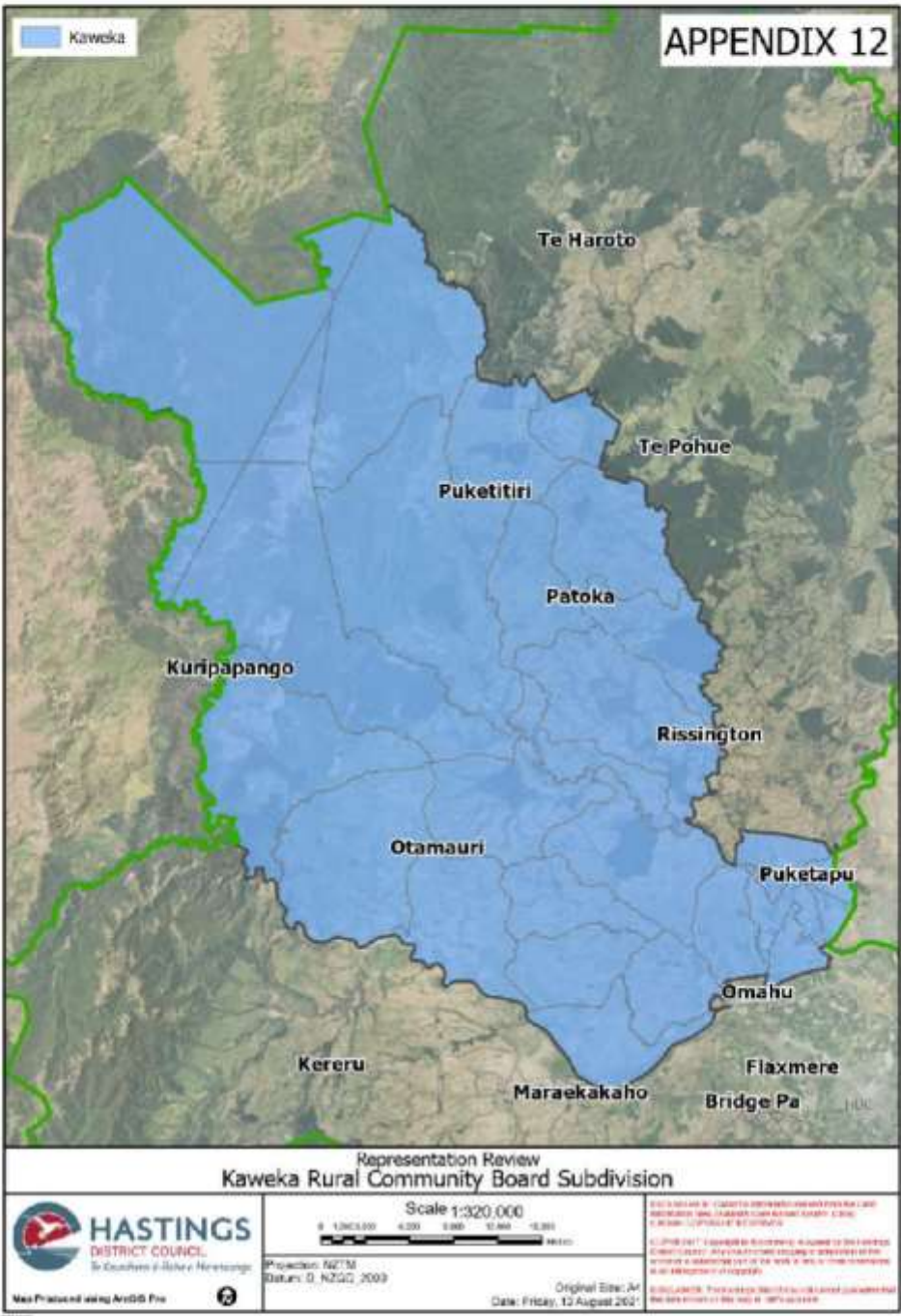


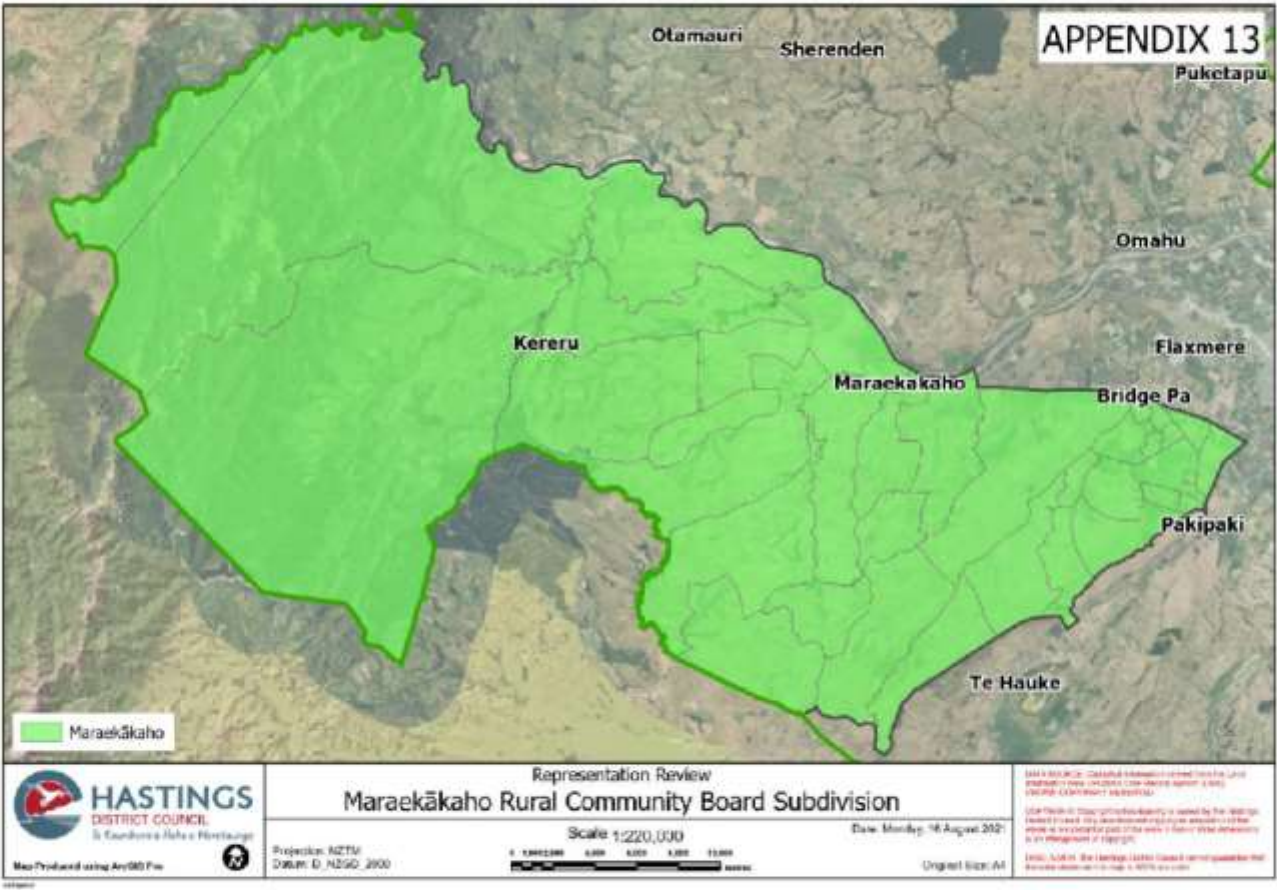


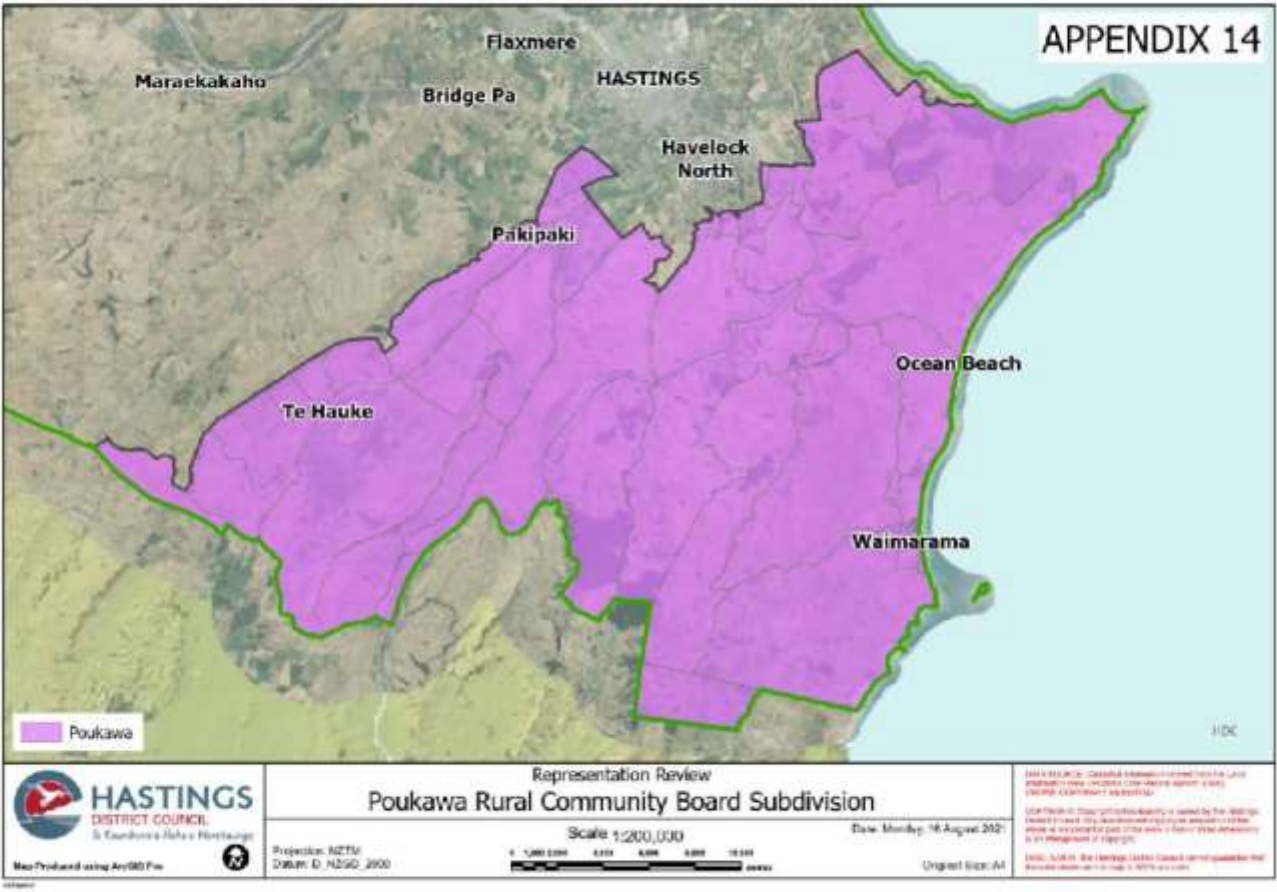














# PUBLIC NOTICE

## INITIAL PROPOSAL FOR REPRESENTATION ARRANGEMENTS FOR THE 2022 LOCAL ELECTIONS



On 26 August 2021 the Hastings District Council reviewed its representation arrangements, and resolved that the following proposal apply for the Council and its community board for the elections to be held on 8 October 2022:

### Council Representation

It is proposed that the Council comprise 15 members elected from six wards, and the mayor. The six wards reflect the following identified communities of interest:

Ward Name	Communities of interest
<b>General Wards</b>	
Flaxmere Ward	The general electoral population from the urban community of Flaxmere Village.
Hastings-Havelock North Ward	The general electoral population from the urban communities of Hastings City and Havelock North Village.
Heretaunga Ward	The general electoral population from the villages of Clive, Haumoana, Te Awanga and Whakatū and from the Heretaunga Plains area excluding the urban areas of Hastings, Flaxmere and Havelock North.
Kahurānaki Ward	The general electoral population from the rural area of Hastings District south of the Ngaruroro River and south and east of Havelock North and the Heretaunga Plains.
Mohaka Ward	The general electoral population from the rural area of Hastings District north of the Ngaruroro River and west of the Heretaunga Plains.
<b>Māori Ward</b>	
Takitimu Ward	The Māori electoral population from across the entire Hastings District.

The population that each member will represent is as follows:

Ward	Population # (2018 census) (June 2020 pop'n estimates)	Members	Population per member
<b>General Wards</b>			
Flaxmere Ward	6,830	1	6,830
Hastings-Havelock North Ward	43,200	7	6,171
Heretaunga Ward	10,600	2	5,300
Kahurānaki Ward	5,250	1	5,250
Mohaka Ward	5,780	1	5,780
Total General Wards	71,600	12	5,967 Avg
<b>Māori Ward</b>			
Takitimu Ward	16,400	3	5,467
Total All Wards	88,000	15	

#Difference in Statistics NZ rounding

Note: The number of Māori ward Councillors is set by a formula stipulated in the Local Electoral Act 2001. Based on the size of the Māori electoral population and total electoral population, with Hastings District Council proposing to elect a total of 15 Councillors from wards, three of those Councillors must be elected from the Māori ward.

In accordance with section 19V(2), Local Electoral Act 2001 the population that each general ward member represents must be within the range of 5,967 +/- 10% (5,370 to 6,564), unless particular community of interest considerations justify otherwise.

The representation of the Flaxmere Ward falls outside the stipulated range as it is under-represented at 14.46% deviation from the average population per councillor. The Council considers that achieving compliance with the +/-10% range in relation to the Flaxmere Ward would require either merging the Ward into the Hastings-Havelock Ward or shifting a significant part of the ward into either the Hastings-Havelock Ward or the Heretaunga Ward. The former approach would limit effective representation of the Flaxmere community of interest by uniting it with a much larger set of communities of interests with few commonalities of interest. The Flaxmere community of interest would become diffused among a much larger population. The latter approach would limit effective representation of communities of interest by dividing the Flaxmere community of interest between two wards.

The representation for the Heretaunga Ward falls outside the stipulated range as it is over-represented at -11.18% deviation from the average population per councillor. The Council considers that achieving compliance with the +/-10% range for the Heretaunga Ward would require adding parts of other communities of interest (likely urban and/or rural) to the Ward which would limit effective representation of communities of interest by uniting within the Heretaunga Ward communities of interest with few commonalities of interest. It would also limit effective representation of communities of interest by dividing the urban and/or rural communities of interest from which those part communities of interest would be drawn.

The representation for the Kahurānaki Ward falls outside of the stipulated range as it is over-represented at -12.02% deviation from the average population per councillor. The Council considers that achieving compliance with the +/-10% range for the Kahurānaki Ward would require adding parts of other communities of interest (from the Heretaunga Ward) to the Ward which would limit effective representation of communities of interest by dividing the horticultural and Heretaunga Plains communities of interest from which those part communities of interest would be drawn.

### Community Board Representation

The Council resolved to retain the Hastings District Rural Community Board. No other Community Boards are proposed to be introduced.

Community Board	Area of Community
Hastings District Rural Community Board	The general and Māori electoral population of the Mohaka and Kahurānaki Wards.

The Hastings District Rural Community Board will elect four members.

It is proposed that there will be three Councillors appointed to the Board (rather than two as per the previous arrangements). These will be:

Community Board	Number of Members Appointed from Which Ward
Hastings District Rural Community Board	One Member appointed from the Mohaka Ward
	One Member appointed from the Kahurānaki Ward
	One Member appointed from the Takitimu Ward

The community will be divided into four for electoral purposes. The four subdivisions will be:

Subdivision	Area of Subdivision
Tūtira Subdivision	Subdivision of the Mohaka Ward
Kaweka Subdivision	Subdivision of the Mohaka Ward
Maraekākaho Subdivision	Subdivision of the Poukawa Ward
Poukawa Subdivision	Subdivision of the Poukawa Ward

The population that the members of each subdivision will represent is shown below:

Subdivision	Population # (2018 census)	Members	Population per member
Tūtira Subdivision	3,090	1	3,090
Mohaka Subdivision	3,220	1	3,220
Maraekākaho Subdivision	2,890	1	2,890
Poukawa Subdivision	3,370	1	3,370
Total	12,570	4	3,143 Avg

The population each member of the Hastings District Rural Community Board represents falls within the range of 3,143 +/-10% (3,457 – 2,829) in accordance with section 19V(2), Local Electoral Act.

There are a number of boundary adjustments proposed affecting some of the General Wards and Rural Community Board electoral subdivisions. Refer to the detailed proposal.

### Further Information

Relevant information is available on Council's website: [www.hastingsdc.govt.nz](http://www.hastingsdc.govt.nz).

Subject to Covid restrictions, copies of the detailed proposal including Council's resolution and maps setting out the areas of the proposed wards, communities and subdivisions may be viewed and obtained from:

- Customer Services Centre, Hastings District Council Civic Administration Building, 207 Lyndon Road East, Hastings
- Flaxmere Library
- Hastings Library
- Havelock North Library

Any queries regarding Council's decision should be directed to the Deputy Electoral Officer, Vicki Rusbatch, 06 871 5000, [vickir@hdc.govt.nz](mailto:vickir@hdc.govt.nz).

### Submissions are invited

Persons with an interest in the proposed representation arrangements are invited to make written submissions on the Council's representation proposal.

Submissions can be made via [www.myvoicemychoice.co.nz](http://www.myvoicemychoice.co.nz)

Submissions can also be forwarded to:

Deputy Electoral Officer  
Hastings District Council, Private Bag 9002  
Hastings 4156  
Or via email: [representationreview@hdc.govt.nz](mailto:representationreview@hdc.govt.nz)  
Submissions must be received by Council no later than 1 October 2021.

Nigel Bickle,  
Chief Executive, 30 August 2021





# HASTINGS DISTRICT COUNCIL REPRESENTATION REVIEW CONSULTATION



## What is a Representation Review?

As a local authority, Hastings District Council is required to take a fresh look at how you are represented around the Council table at least once every six years.

We last held a representation review in 2018. The Council decision to introduce Māori wards earlier this year means we are required to do another review in 2021.

This could affect the total number of councillors, the numbers of wards, the boundaries of wards, the number of community

boards and the number of members on the board.

The outcome of this will apply to the 2022 and 2025 local elections.

Council has already resolved to keep First Past the Post electoral system and to introduce Māori ward/s. These matters are not within the scope of the Representation Review. The number and configuration of Māori wards (i.e., one or more) is within the scope of this review.

## Council's Initial Proposal for Representation Arrangements

On 26 August 2021, Council adopted an Initial Proposal for Representation Arrangements as follows:

### Council Representation

#### THE PROPOSED MODEL

**15 COUNCILLORS  
+ MAYOR**



12 elected from 5 general wards



3 elected from  
Māori ward



1 Mayor  
(elected at large)

The introduction of a Māori ward has affected the electoral population of the general wards. The impact is not uniform – for instance over 40 % of the former electoral population in the Flaxmere Ward transfers to the Takitimu Ward electoral population.

## Wards & Ward Boundaries

### 5 General Wards:

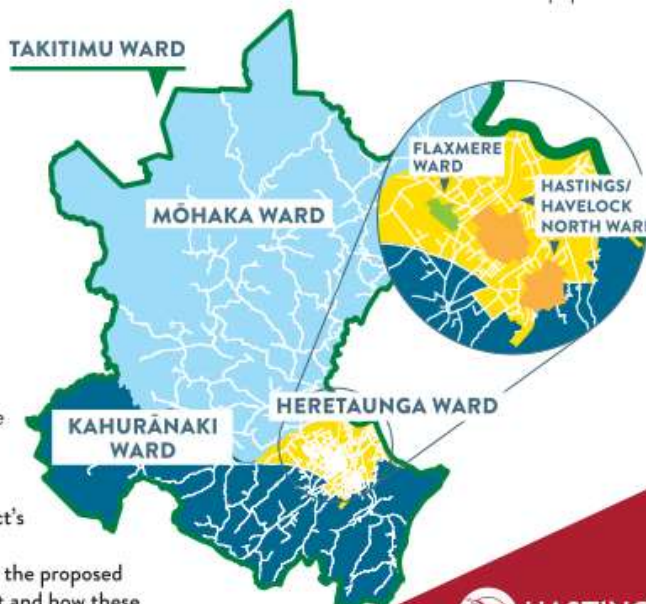
- Flaxmere (1 councillor)
- Hastings-Havelock North (7 councillors)
- Heretaunga (2 councillors)
- Kahurānaki (1 councillor)
- Mohaka (1 councillor)

### 1 Māori Ward:

- Takitimu comprising the area of the whole of the Hastings District (3 councillors)

Council has introduced a Māori ward and retained the same five-ward structure for the general wards with minor boundary adjustments.

The Council believes that the wards reflect the district's communities of interest. Visit the Council website [www.hdc.govt.nz/representation](http://www.hdc.govt.nz/representation) to learn more about the proposed boundary changes, identified communities of interest and how these communities will be represented.



## The $\pm 10\%$ “rule”:

The  $\pm 10\%$  “rule” is an important guide in assessing fair representation. Simply put, this rule looks to ensure each elected member of council represents a similar number of people. It requires the number of people represented by each councillor from a general ward be within  $\pm 10\%$  of the average across all elected members from the general wards. If the proposal is not compliant with the  $\pm 10\%$  “rule”, it has to be approved by the Local Government Commission.

Based on these representation arrangements the following wards fall outside  $\pm 10\%$  range from the average population per councillor set out in the Local Electoral Act:

- **Kahurānaki Ward** over-represented at -11.61% deviation from the average population per councillor
- **Heretaunga Ward** over-represented at -11.28% deviation from the average population per councillor
- **Flaxmere Ward** under-represented at +14.02% deviation from the average population per councillor

Although this doesn't comply with the  $\pm 10\%$  “rule”, Council considers that the Initial Proposal provides effective representation for the communities of interest within the Hastings District.

## What about Community Board Representation?

The Council resolved to retain the Hastings District Rural Community Board and not to introduce other Community Boards.

### HASTINGS DISTRICT RURAL COMMUNITY BOARD



4 members elected from 4 subdivisions  
(covering the area of Mohaka  
& Kahurānaki Wards)



3 members  
appointed  
by Council

Council proposes that there will continue to be **four elected members** from the electoral subdivisions below. It is proposed that there will be **three Councillors** appointed to the Board (rather than two as per the previous arrangements). These will be the Councillor elected to represent the Mohaka Ward, the Councillor elected to represent the Kahurānaki Ward, and one Councillor from among those elected to represent the Takitimu Ward (the Takitimu Ward encompasses the area of the Rural Community Board and those on the Māori Electoral Roll vote for Community Board Members).

**Subdivision boundaries reflect Council ward boundary adjustments with additional boundary adjustments between the Poukawa and Maraekākaho subdivisions to balance population estimates and provide for fair representation.**



## Give us your feedback by Friday, 1 October

The Proposal is now open to your submissions. We invite you to give us your feedback.

- On [www.myvoicemychoice.co.nz](http://www.myvoicemychoice.co.nz)

• Submissions can also be forwarded to:  
Deputy Electoral Officer  
Hastings District Council  
Private Bag 9002, Hastings 4156

- Or via email:  
[representationreview@hdc.govt.nz](mailto:representationreview@hdc.govt.nz)

If you have any questions you can contact Deputy Electoral Officer, Vicki Rusbatch, phone 06 871 5000, or email [vickir@hdc.govt.nz](mailto:vickir@hdc.govt.nz).





Representation Review 2020/21 Initial Proposal – Maps of Proposed Meshblock shifts

